

Handheld Raman Spectrometer

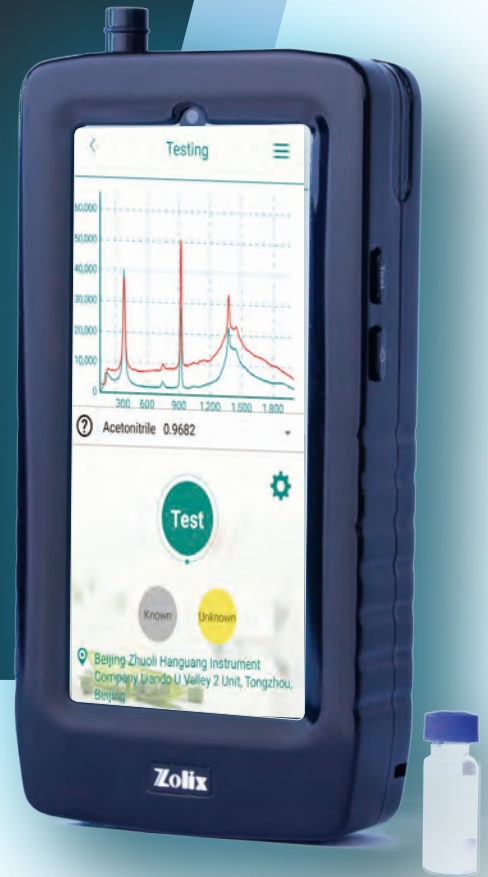


Raman on Mobile, Library in Hands

Finder Edge (FE) is fast and compact Raman Spectrometer, ensure efficient processing ; It can be used by non-technical users to rapidly identify samples in the lab, warehouse etc. The non-contact analysis can be performed through transparent containers by Raman technology; Strong hardware performance and diversified library are your reliable partner;

Characteristic

1. Small and convenient on-site inspection
2. Running capacity up to 6 hours
3. One-click recognition, all in control



Regulations

Finder Edge is fully compliant with FDA 21 CFR Part 11 regulations; Complying with the following regulations and standards: Chinese pharmacopoeia (General Rule 0421), American Pharmacopoeia 1120, European Pharmacopoeia 2.2.48

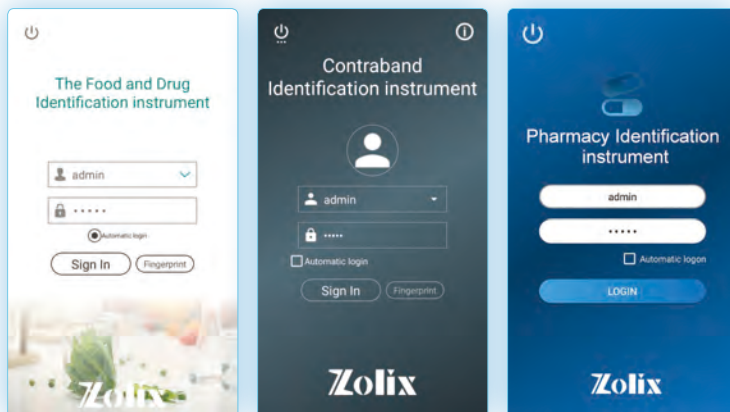
High-end customization, cloud monitoring

Appearance, software function, arithmetic requirement, sample rack and whole machine design can be customized, and complete application solutions can be matched to meet application requirements.

We can build a "Food and Drug Intelligent Supervision Platform" to effectively supervise the production, circulation and use of food and drug.

Cloud service-Intelligent regulatory platform

The operation process as below:



Save and upload data

Login cloud

Data save and view

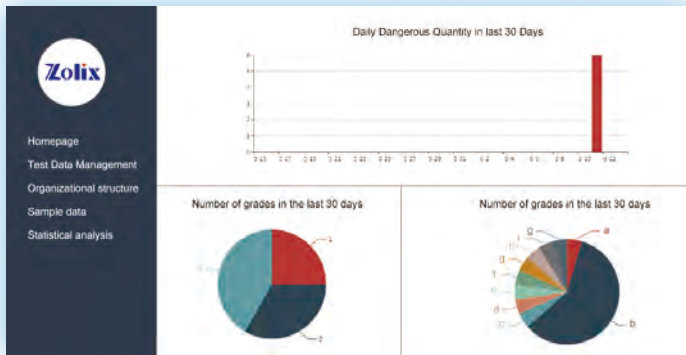


Build database: support factory database and local self-built database to meet the extension needs.

Identification report: show accurate judgment result directly and test report.

User administration: user group management, build subordinate accounts and permissions.

Cloud Services - applications without "edge" boundaries



Specification

Laser Wavelength	785nm
Laser Output Power	≤450mW
Spectral Range	200-2000cm ⁻¹
Spectral Resolution	12cm ⁻¹
Connectivity	Bluetooth and Wifi
Certification	CE and ROHS
Collection Optics	10mm and 15mm focus lens
Laser Class	Class 3B
Weight	0.48Kg
Size	18cm*8.85cm*3.3cm

Solve diverse application-side requirements inspection filed

Food Safety

Illegal additives, residues of agricultural and veterinary drugs, food additives, etc.

Gems&Minerals

Identification of jewelry authenticity, dyeing identification, inclusion analysis, etc.

Petro&Chemical industry

Oil adulteration, oil quality analysis, chemical raw materials, intermediate and finished products testing

Pharmaceutical Industry

Identification of raw materials and accessories, additives of traditional Chinese medicine, detection of API active ingredients, qualitative identification and counterfeiting of drugs, etc.

Others

Scientific archeology, narcotics analysis, security, biomedical diagnostics, environment protection, process monitoring, led lighting, geology/mineralogy etc.

Various types of samples tested

Solid



Powder



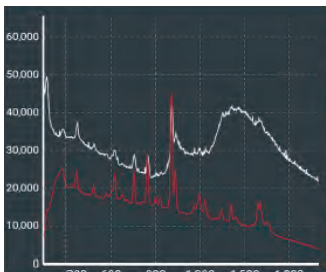
Liquid



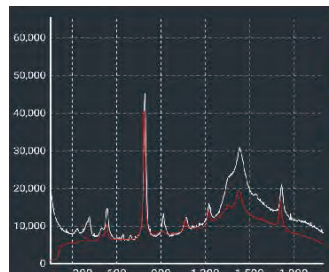
Colloid



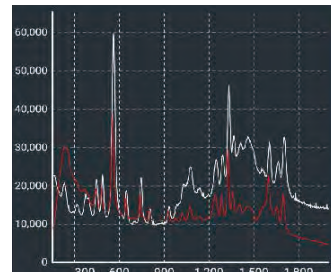
Application case



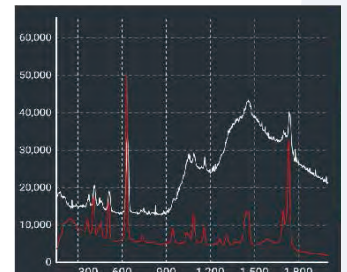
Identification result:
Drug-methamphetamine



Identification result:
Inhibition of Drug-Acetone



Identification result:
drug-caffeine



Identification results:
drug-barbiturate